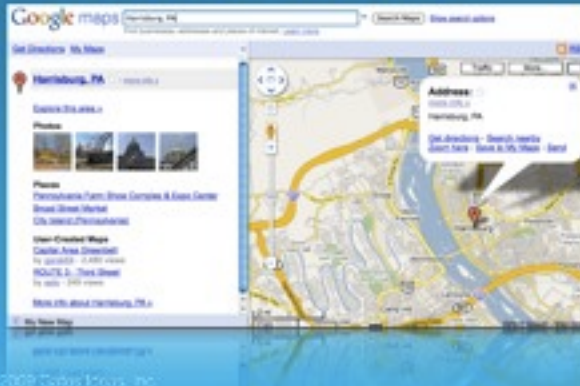


Google Maps

HOW TO SHARE A GOOGLE MAP



A visual tutorial on how to create and share a Google map

At maps.google.com, click the My Maps link in the top left corner

Then, click Create new map

Get Directions **My Maps (1)** <<
Create new map - Browse the directory
(2)

(1) Click My Maps

(2) Click Create new map

Get Directions My Maps

Collaborate Import Done Save

Title
My New Map (1)

Description
This will be for us to share. (2)

Privacy and sharing settings [Learn more](#)

☐ Public - Shared with everyone. This map will be published in search results and user profiles.

☒ Unlisted - Shared only with selected people who have this map's URL. (3)

(1) Give it a title

(2) Supply a description

(3) Decide if it's Public or

- 1) Enter a name (editable later) for the map
- 2) Supply a brief description
- 3) Decide if you wish it to be public or Unlisted. You'll probably keep it Unlisted for students



(1) Search for desired location

(2) Click Save to My Maps

- 1) Enter the address for your desired placemark. You may be as specific as you wish
- 2) When the placemark appears, click the “Save to My Maps” link



(1) Choose which map to save it to and click Save

1) Choose the map you're saving it to and click Save. You must do this step before you're able to edit the placemark

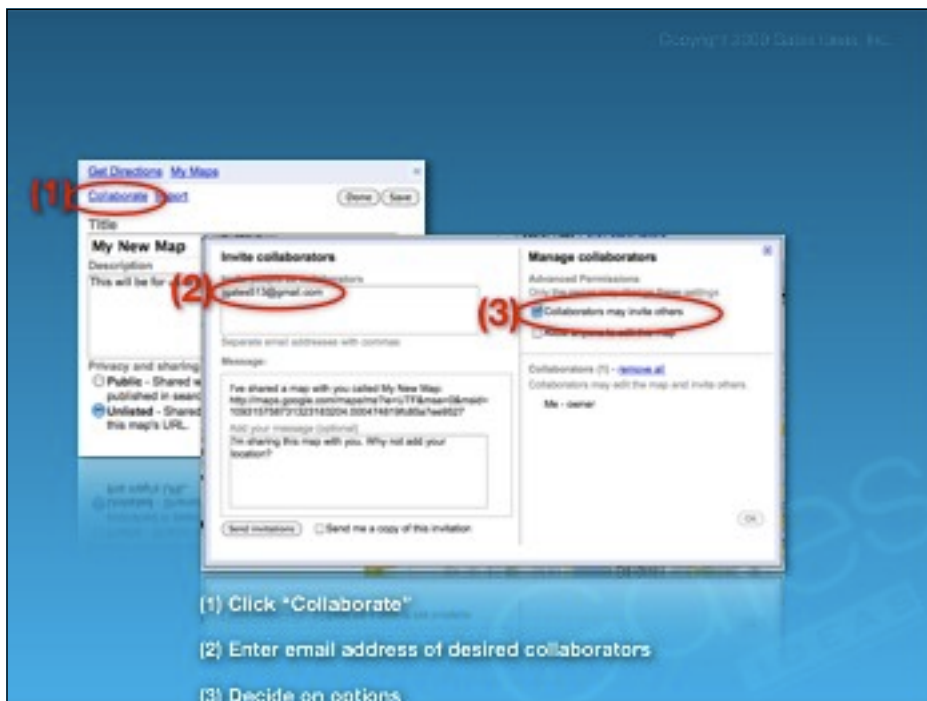


(1) Choose to format placemark using Rich Text or HTML

1) Decide if you wish to edit the placemark using Plain text, Rich text, or HTML. This picture shows the options available when using Rich text. This should suffice for most students and projects



1) Click the icon in the corner to change the icon. Note that you're also able to upload your own icons, if you have some you wish to use



1) To share the map with others and allow them to enter locations, click the Collaborate link in the top left corner of the page

2) Supply the email addresses for those you wish to give permissions to edit

3) Decide if you want them to be able to invite others

Get Directions My Maps

Collaborate Import

(1) Done Save

Title

My New Map

Description

This will be for us to share.

Privacy and sharing settings [Learn more](#)

☐ Public - Shared with everyone. This map will be published in search results and user profiles.

☒ Unlisted - Shared only with selected people who have this map's URL.

(1) Click "Done"

Don't forget to click Done when you're finished